

Product data sheet

Boxer ISM-EFS



Integrated door closer system for double leaf doors with closing sequence control and electric free swing function



AREAS OF APPLICATION

- Fire and smoke protection doors, proof of suitability for the door required
- Double leaf single-action doors
- Symmetrical and asymmetrical division of door possible
- Single-action doors up to 2800 mm hinge clearance and 1400 mm leaf width, for door weights up to 180 kg
- Minimum hinge clearance 1300 mm, minimum width of passive leaf 540 mm
- For door leaf thicknesses from 50 mm
- Integrated installation
- Hold-open systems with integrated hold-open device with free swing
- Barrier-free access in accordance with DIN 18040

PRODUCT FEATURES

- System comprising two door closers Boxer EFS 4-6 and Boxer 2-4 or 3-6 with ISM guide rail
- Closing force with variable adjustment of EN4-6 on the active leaf, EN3-6 or EN2-4 on the passive leaf
- Can be used for right and left hand doors without conversion
- Door closer is embedded in the door leaf and frame and fulfils the highest design demands
- Closing sequence control holds the active leaf in the waiting position until the passive leaf is closed
- Free swing function makes it possible to pass through the door with little physical force required
- Comfort hold-open function stops the door at the end of the free swing area
- Smoke switch control unit can be connected, whose signal makes the door close automatically in the event of a fire
- Integrated back check, slows down doors that are thrown open forcefully
- Hydraulic latching action which accelerates the door shortly before it is closed
- Closing speed can be individually adjusted
- All functions can be adjusted in the installed state

TECHNICAL DATA

Productname	Boxer ISM-EFS
Closing force in accordance with EN 1154	EN 2 - 6
Barrier-free in accordance with DIN 18040 up to leaf width (max.) in mm	1400 mm
Leaf width (max.)	1400 mm
Leaf weight (max.)	180 kg
Type of installation	concealed
Opening angle (max.)	120 °

Boxer ISM-EFS



Minimum hinge clearance	1300 mm
Minimum passive leaf width	540 mm
Suitability for fire protection doors	Yes
Closing force adjustable	Yes, stepless
Adjustable closing speed	Yes
Latching action adjustable	Yes, via valve
Back check integrated	Yes, hydraulically adjustable
Position of closing force adjustment	Top
Hold-open device	Optional
Hold-open device on the active leaf	Yes
Hold-open device on the passive leaf	Optional
Hold-open device on the active leaf / passive leaf	Yes / Optional
Integrated closing sequence control	Yes

PART

CLOSER BODY BOXER EFS 4-6

Main body for integrated door closer size EN 4-6 with electric free swing function incl. free swing lever with comfort hold-open function



Name	Description	Ident-No.	Closing force in accordance with EN 1154	Dimensions	Colour
GEZE Boxer EFS 4-6	Size EN 4-6, with electric free swing function incl. free swing lever with comfort hold-open function / Leaf width up to 1400 mm, door leaf thickness min. 50 mm	153559	EN 4 - 6	332 x 40 x 54 mm	silver-coloured

CLOSER BODY BOXER 2-4

Main body for integrated door closer EN2-4 with back check



Name	Description	Ident-No.	Closing force in accordance with EN 1154	Spindle extension	Dimensions
GEZE Boxer 2-4 closer	Closing force EN2-4 with back check (without guide rail), leaf width up to 1100 mm, door leaf thickness min. 40 mm	101759	EN 2 - 4	4 mm	286 x 32 x 45 mm
GEZE Boxer 2-4 closer	Closing force EN2-4 with back check (without guide rail), leaf width up to 1100 mm, door leaf thickness min. 40 mm	099728	EN 2 - 4		286 x 32 x 45 mm

Boxer ISM-EFS



CLOSER BODY BOXER 2-4 2V

Main body for integrated door closer EN2-4 with back check and latching action valve



Name	Description	Ident-No.	Closing force in accordance with EN 1154	Spindle extension	Dimensions
GEZE Boxer 2-4 2V closer	Closing force EN2-4 with back check and independent latching action valve (smooth latching function also possible, without guide rail) / Leaf width up to 1100 mm, door leaf thickness min. 40 mm	134494	EN 2 - 4	8 mm	286 x 32 x 45 mm
GEZE Boxer 2-4 2V closer	Closing force EN2-4 with back check and independent latching action valve (smooth latching function also possible, without guide rail) / Leaf width up to 1100 mm, door leaf thickness min. 40 mm	134448	EN 2 - 4		286 x 32 x 45 mm
GEZE Boxer 2-4 2V closer	Closing force EN2-4 with back check and independent latching action valve (smooth latching function also possible, without guide rail) / Leaf width up to 1100 mm, door leaf thickness min. 40 mm	134493	EN 2 - 4	4 mm	286 x 32 x 45 mm

CLOSER BODY BOXER 3-6

Main body for integrated door closer EN 3-6 with back check



Name	Description	Ident-No.	Closing force in accordance with EN 1154	Spindle extension	Dimensions
GEZE Boxer 3-6 closer	Size EN 3-6 with back check (without guide rail) / Leaf width up to 1400 mm, door leaf thickness min. 50 mm	101761	EN 3 - 6	4 mm	293 x 40 x 54 mm
GEZE Boxer 3-6 closer	Size EN 3-6 with back check (without guide rail) / Leaf width up to 1400 mm, door leaf thickness min. 50 mm	099735	EN 3 - 6		293 x 40 x 54 mm
GEZE Boxer 3-6 closer	Size EN 3-6 with back check (without guide rail) / Leaf width up to 1400 mm, door leaf thickness min. 50 mm	101762	EN 3 - 6	8 mm	293 x 40 x 54 mm

Boxer ISM-EFS



ISM GUIDE RAIL BOXER

With closing sequence control and lever



Name	Description	Ident-No.	Colour
ISM guide rail Boxer	with integrated closing sequence control and levers	114141	silver-coloured

ISM GUIDE RAIL BOXER SMALL PASSIVE LEAF

For small passive leaves from 420 mm, with integrated closing sequence control and levers

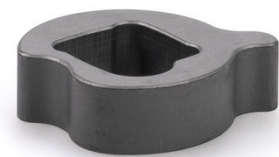


Name	Description	Ident-No.	Colour
ISM guide rail Boxer small passive leaf	especially for doors with small passive leaf from 420 mm, with integrated closing sequence control and levers	128597	silver-coloured

ACCESSORY

SPINDLE EXTENSION BOXER EFS 4-6

For comfort latching lever



Name	Description	Ident-No.	Spindle extension
Spindle extension Boxer EFS 4-6	for comfort latching lever	153574	8 mm
Spindle extension Boxer EFS 4-6	for comfort latching lever	153573	4 mm

Boxer ISM-EFS



CB FLEX

Carry bar for safe closing of double leaf fire protection doors



Name	Description	Ident-No.	Colour
GEZE CB flex	for use on all 2-leaf rebated doors. Concealed length adjustment with variable adjustment up to 210 mm leaf projection, hinged mechanism not visible, profile can be shortened if required, with attachment material	182652	white RAL 9016
GEZE CB flex	for use on all 2-leaf rebated doors. Concealed length adjustment with variable adjustment up to 210 mm leaf projection, hinged mechanism not visible, profile can be shortened if required, with attachment material	153602	silver-coloured
GEZE CB flex	for use on all 2-leaf rebated doors. Concealed length adjustment with variable adjustment up to 210 mm leaf projection, hinged mechanism not visible, profile can be shortened if required, with attachment material	153728	acc. to RAL

GC 152

Smoke detector for GEZE hold-open systems



Name	Description	Ident-No.	Colour	Supply voltage	Type of installation
GEZE smoke detector GC 152	Complete with base, 24 V DC, 20 mA, tested in accordance with EN54-7, with general approval for use with all GEZE hold-open systems FA GC 150, integrated line monitoring, conform with DIN EN 14637	139850	white	24 V DC	Ceiling installation

GC 153

Thermal detector for GEZE hold-open systems



Name	Description	Ident-No.	Colour	Supply voltage	Type of installation
GEZE thermal detector GC 153	Complete with base, 24 V DC, 20 mA, tested in accordance with EN54-5, with general approval for use with all GEZE hold-open systems FA GC 150, integrated line monitoring, conform with DIN EN 14637	139881	white	24 V DC	Ceiling installation

SURFACE-MOUNTED BOX, SINGLE

Matching the AS 500 switch range



Name	Description	Ident-No.	Colour
Surface-mounted box, single	Matching the AS 500 switch range	120503	alpine white

AS 500

Manual trigger switch for the manual release of electrically controlled hold-open devices



Name	Description	Ident-No.	Colour	Dimensions	Operating voltage
AS 500 manual trigger switch	for the manual release of electrically controlled hold-open devices including terminating resistor for line monitoring	116266	alpine white/red	80 x 80 x 9 mm	24 V DC
AS 500 manual trigger switch, glass	for the manual release of electrically controlled hold-open devices including terminating resistor for line monitoring, glass pane and 5 interchangeable labels	120880	alpine white/red	80 x 80 x 21 mm	24 V DC

RSZ 7

Extendable smoke switch control unit for all GEZE hold-open devices



Name	Description	Ident-No.	Colour	Supply voltage	Length
RSZ 7 smoke switch control unit	Smoke switch control unit for all GEZE hold-open devices	185231	acc. to RAL	230 V	346 mm
RSZ 7 smoke switch control unit	Smoke switch control unit for all GEZE hold-open devices	184196	stainless steel optic	230 V	346 mm
RSZ 7 smoke switch control unit	Smoke switch control unit for all GEZE hold-open devices	181025	silver-coloured	230 V	346 mm
RSZ 7 smoke switch control unit	Smoke switch control unit for all GEZE hold-open devices	184195	white RAL 9016	230 V	346 mm

Boxer ISM-EFS



FLEXIBLE OPENING RESTRICTOR

For E and R guide rails, single and double leaf



Name	Description	Ident-No.
Flexible opening restrictor	for guide rail 1-leaf: TS 5000 E/R/RFS (door leaf installation), Boxer E; 2-leaf: all E/R/ISM variants TS 5000 (incl. VPK) and Boxer	145311