

Product data sheet

Slimdrive EMD-F/R-IS

*



Electromechanical swing door drive system for double leaf fire and smoke protection doors with closing sequence control and integrated smoke switch



AREAS OF APPLICATION

- Fire and smoke protection doors
- Hold-open systems with integrated hold-open function – country-specific specifications must be observed
- Right and left double leaf single-action doors
- Single-action doors up to 2800 mm hinge clearance, 1400 mm leaf width and 230 kg weight
- Interior and exterior doors with high access frequency
- Transom installation hinge and opposite hinge side

PRODUCT FEATURES

- Closing force with variable adjustment of EN 4-6
- Integrated smoke switch control unit, whose signal closes the door automatically in the event of a fire
- Opening and closing speed can be individually adjusted
- Mechanical latching action when operated without current, and electrical latching action in regular operation, which accelerates the door shortly before the closed position
- Mechanical and electrical closing sequence control holds the active leaf in the waiting position until the passive leaf is closed
- Low-energy function opens and closes the door with reduced speed, fulfilling the highest safety demands
- Obstacle detection detects an object through contact and stops the opening or closing process
- Automatic reversing detects an obstacle and returns to the opening position
- Push & Go function triggers the automatic drive following light manual pressure on the door leaf
- Drive can be used with roller guide rail or link arm
- Servo function for motorized support when manually opening the door
- Freely configurable inputs and outputs for different functions
- Can be networked, and integrated into the building automation via open standard (BACnet)

TECHNICAL DATA

Productname	Slimdrive EMD-F/R-IS *
Leaf weight (max.) 1-leaf	230 kg
Hinge clearance (min.-max.) 2-leaf, link arm	1500 mm - 2800 mm
Hinge clearance (min.-max.) 2-leaf, roller guide rail	1700 mm - 2500 mm
Leaf width (min.-max.)	850 mm - 1400 mm
Reveal depth (max.)	300 mm
Door overlap (max.)	50 mm
Drive type	Electromechanical
Opening angle (max.)	130 °



DIN left	Yes
DIN right	Yes
Transom installation opposite hinge side with link arm	Yes
Transom installation opposite hinge side with roller guide rail	Yes
Transom installation hinge side with roller guide rail	Yes
Mechanical latching action	Yes
Electrical latching action	Yes
Electrical closing sequence control	Yes
Mechanical closing sequence control	Yes
Disconnection from mains	Main switch in the drive
Activation delay (max.)	20 s
Operating voltage	230 V
Power rating	230 W
Power supply for external consumers (24 V DC)	1000 mA
Service temperature	-15 - 50 °C
Air humidity non-condensing (max.)	95 %
IP rating	IP20
Mode of operation	Automatic, Permanently open, Night, Off, Shop closing
Automatic function	Yes
Low-energy function	Yes
function smart swing	No
Obstacle detection	Yes
Automatic reversing	Yes
Push & Go	adjustable
Operation	Programme switch integrated in the drive, Programme switch DPS, MPS programme switch
Parameter setting	ST 220 service terminal, Programme switch DPS, GEZEconnects (PC + Bluetooth)
Standard conformity	DIN 18263-4, DIN 18650, EN 1158, EN 16005
Approvals	General building approval from DIBt as a hold-open system
Suitability for fire protection doors	Yes
Smoke switch integrated	Yes

PART**COVER EXTENSION KIT SLIMDRIVE EMD ***

For the Slimdrive EMD swing door drive, including mounting plates and installation material



Designation	Ident-No.
Intermediate cover kit Slimdrive EMD	122770
Cover extension kit Slimdrive EMD *	122781

LINK ARM SLIMDRIVE EMD

For transom installation on opposite hinge side for reveal depths of 0 - 400 mm



Designation	Description	Ident-No.	Colour
Link arm Slimdrive EMD	for Slimdrive EMD / EMD-F, reveal depth 200-300 mm	144389	silver-coloured
Link arm Slimdrive EMD	for Slimdrive EMD / EMD-F, reveal depth 0-100 mm	144383	according to RAL
Link arm Slimdrive EMD	for Slimdrive EMD / EMD-F, reveal depth 0-100 mm	144381	silver-coloured
Link arm Slimdrive EMD *	for Slimdrive EMD / EMD-F, reveal depth 200-300 mm	144391	according to RAL
Link arm Slimdrive EMD *	for Slimdrive EMD / EMD-F, reveal depth 100-200 mm	144387	according to RAL
Link arm Slimdrive EMD	for Slimdrive EMD / EMD-F, reveal depth 100-200 mm	144385	silver-coloured
Link arm Slimdrive EMD	for Slimdrive EMD / EMD-F, reveal depth 300-400 mm	144395	according to RAL
Link arm Slimdrive EMD	for Slimdrive EMD / EMD-F, reveal depth 300-400 mm	144393	silver-coloured

MOUNTING PLATE SLIMDRIVE EMD 2-LEAF *

For installing the drive on the frame



Designation	Ident-No.
Mounting plate Slimdrive EMD 2-leaf	115095

MOUNTING PLATE SLIMDRIVE EMD, INCL. ACCESSORIES

For installing the drive on the frame or the door leaf



Designation	Ident-No.	Colour
Mounting plate Slimdrive EMD, incl. accessories	108529	according to RAL
Mounting plate Slimdrive EMD, incl. accessories	108526	silver-coloured

ROLLER GUIDE RAIL SLIMDRIVE EMD / EMD-F / EMD INVERS

For transom installation on the hinge or opposite hinge side



Designation	Description	Ident-No.	Colour	Type of installation
Roller guide rail Slimdrive EMD	for transom installation (Slimdrive EMD Invers)	108053	according to RAL	Transom installation
Roller guide rail Slimdrive EMD	for transom installation hinge side (Slimdrive EMD / EMD-F)	108042	silver-coloured	Transom installation hinge side
Roller guide rail Slimdrive EMD	for transom installation (Slimdrive EMD Invers)	108048	silver-coloured	Transom installation
Roller guide rail Slimdrive EMD	for transom installation hinge side (Slimdrive EMD / EMD-F)	108047	according to RAL	Transom installation hinge side
Roller guide rail Slimdrive EMD	with deeper guide, for transom installation, length 710 mm, 30 x 30 mm	133242	silver-coloured	Transom installation hinge side
Roller guide rail Slimdrive EMD	with deeper guide, for door leaf installation Slimdrive EMD, for for transom installation Slimdrive EMD Invers, length 760, 30 x 30 mm	133243	silver-coloured	Transom installation hinge side

ROLLER GUIDE RAIL SLIMDRIVE EMD / EMD-F *

For transom installation on the opposite hinge side



Designation	Description	Ident-No.	Colour	Type of installation
Roller guide rail Slimdrive EMD	for transom installation opposite hinge side (Slimdrive EMD / EMD-F), DIN left	149941	according to RAL	Transom installation opposite hinge side, DIN left
Roller guide rail Slimdrive EMD	for transom installation opposite hinge side (Slimdrive EMD / EMD-F), DIN left	149918	silver- coloured	Transom installation opposite hinge side, DIN left
Roller guide rail Slimdrive EMD	for transom installation opposite hinge side (Slimdrive EMD / EMD-F), DIN right	149946	according to RAL	Transom installation opposite hinge side, DIN right
Roller guide rail Slimdrive EMD	for transom installation opposite hinge side (Slimdrive EMD / EMD-F), DIN right	149942	silver- coloured	Transom installation opposite hinge side, DIN right

GC GR FOR GC 338 SLIMDRIVE EMD / EMD-F / INVERS

Sensor roller guide rail Slimdrive EMD for GC 338 sensor strip



Designation	Description	Ident-No.	Colour	Type of installation
GC GR for GC 338 Slimdrive EMD	DIN right, with deep guide, transom installation opposite hinge side (Slimdrive EMD-F / Invers), incl. lever and end caps	149962	according to RAL	DIN right, Transom installation opposite hinge side
GC GR for GC 338 Slimdrive EMD	DIN left, with deep guide, transom installation opposite hinge side (Slimdrive EMD-F / Invers), incl. lever and end caps	149956	according to RAL	DIN left, Transom installation opposite hinge side
GC GR for GC 338 Slimdrive EMD	with deep guide, for transom installation hinge side (Slimdrive EMD / EMD-F) (Slimdrive EMD / EMD-F / Invers), incl. lever and end caps	146206	EV1	Transom installation hinge side
GC GR for GC 338 Slimdrive EMD	with deep guide, for transom installation hinge side (Slimdrive EMD / EMD-F) (Slimdrive EMD / EMD-F / Invers), incl. lever and end caps	146209	according to RAL	Transom installation hinge side
GC GR for GC 338 Slimdrive EMD	DIN left, with deep guide, transom installation opposite hinge side (Slimdrive EMD-F / Invers), incl. lever and end caps	149952	EV1	DIN left, Transom installation opposite hinge side
GC GR for GC 338 Slimdrive EMD	DIN right, with deep guide, transom installation opposite hinge side (Slimdrive EMD-F / Invers), incl. lever and end caps	149958	EV1	DIN right, Transom installation opposite hinge side
GC GR for GC 338 Slimdrive EMD	with deep guide, for transom installation hinge side (Slimdrive EMD / EMD-F) (Slimdrive EMD / EMD-F / Invers), incl. lever and end caps	146210	according to RAL	Transom installation hinge side
GC GR for GC 338 Slimdrive EMD *	DIN right, with deep guide, transom installation opposite hinge side (Slimdrive EMD-F / Invers), incl. lever and end caps	149959	EV1	DIN right, Transom installation opposite hinge side
GC GR for GC 338 Slimdrive EMD	with deep guide, for transom installation hinge side (Slimdrive EMD / EMD-F) (Slimdrive EMD / EMD-F / Invers), incl. lever and end caps	146205	EV1	Transom installation hinge side

CONNECTOR PLUG EMD 2-LEAF 230 V

230V plug for connecting a second drive in double leaf Slimdrive EMD swing door systems

Designation	Ident-No.	Colour
Connector plug EMD 2-leaf 230 V	199594	black

CONNECTOR PLUG POWERTURN / EMD 230 V

230 V connection and GEZE logo for the Powerturn / EMD



Designation	Description	Ident-No.	Colour
Connection Powerturn / EMD 230 V	Connector plug Powerturn / EMD	156890	black

GC GR EMD W/ SCREWABLE ROLLER BOLT

configurable, with C-profile and screwable roller bolt



Designation	Description	Ident-No.	Colour
GC GR for GC 338 Slimdrive EMD	configurable, with C-profile and screwable roller bolt	195328	EV1

EMD RAIL WITH SCREW-IN BOLTS

configurable, with C-profile and screwable roller bolt



Designation	Description	Ident-No.	Colour
Roller guide rail Slimdrive EMD	configurable, with C-profile and screwable roller bolt	195327	EV1

ACCESSORIES**SPINDLE EXTENSION SLIMDRIVE EMD**

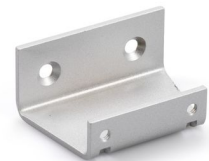
Available length 26 mm



Designation	Description	Ident-No.	Colour
Spindle extension Slimdrive EMD	V = 26 mm	082922	white RAL 9016
Spindle extension Slimdrive EMD	V = 26 mm	082920	dark bronze
Spindle extension EMD	V = 26 mm	082923	according to RAL
Spindle extension EMD	V = 26 mm	082919	silver-coloured

ADAPTER FOR SENSOR LINK ARM

For mounting the link arm at the same height as the sensor strip



Designation	Description	Ident-No.	Colour
Adapter for sensor link arm	For Powerturn, EMD / EMD-F and TSA 160 NT	144352	silver-coloured
Adapter for sensor link arm	For Powerturn, EMD / EMD-F and TSA 160 NT	153126	according to RAL

GC 335

Sensor strip with high safety standard for protecting automatic swing and revolving doors



Designation	Description	Ident-No.	Colour	Dimensions	Output
GC 335 Sensor strip 1400 mm	Protection of the swivelling range of automatic swing and revolving doors in accordance with DIN 18650 / EN 16005 / With one master module and end caps	128071	according to RAL	1400 x 42 x 37 mm	Potential-free relay contact
GC 335 Sensor strip 310 mm	Protection of the swivelling range of automatic swing and revolving doors in accordance with DIN 18650 / EN 16005 / With one master module and end caps	129856	EV1	310 x 42 x 37 mm	Potential-free relay contact
GC 335 Sensor strip 1400 mm	Protection of the swivelling range of automatic swing and revolving doors in accordance with DIN 18650 / EN 16005 / With one master module and end caps	128060	white RAL 9016	1400 x 42 x 37 mm	Potential-free relay contact
GC 335 Sensor strip 900 mm	Protection of the swivelling range of automatic swing and revolving doors in accordance with DIN 18650 / EN 16005 / With one master module and end caps	128057	according to RAL	900 x 42 x 37 mm	Potential-free relay contact

Designation	Description	Ident-No.	Colour	Dimensions	Output
GC 335 Sensor strip 1400 mm	Protection of the swivelling range of automatic swing and revolving doors in accordance with DIN 18650 / EN 16005 / With one master module and end caps	128058	EV1	1400 x 42 x 37 mm	Potential-free relay contact
GC 335 Sensor strip 310 mm	Protection of the swivelling range of automatic swing and revolving doors in accordance with DIN 18650 / EN 16005 / With one master module and end caps	129859	according to RAL	310 x 42 x 37 mm	Potential-free relay contact
GC 335 Sensor strip 900 mm	Protection of the swivelling range of automatic swing and revolving doors in accordance with DIN 18650 / EN 16005 / With one master module and end caps	128054	EV1	900 x 42 x 37 mm	Potential-free relay contact

GC 338

Sensor strip with standby mode for the protection of automatic swing and revolving doors



Designation	Description	Ident-No.	Colour	Output	Operating voltage
GC 338 Pair of sensor strips 1200 mm	consisting of two complete sensor strips for protection of the swivelling range of automatic swing and revolving doors in accordance with DIN 18650 / EN 16005	142825	according to RAL	Electrical relay	24 V DC +/- 20%
GC 338 Pair of sensor strips 1500 mm	consisting of two complete sensor strips for protection of the swivelling range of automatic swing and revolving doors in accordance with DIN 18650 / EN 16005	142827	according to RAL	Potential-free relay contact	24 V DC +/- 20%
GC 338 Pair of sensor strips 1500 mm	consisting of two complete sensor strips for protection of the swivelling range of automatic swing and revolving doors in accordance with DIN 18650 / EN 16005	142757	EV1	Electrical relay	24 V DC +/- 20%
GC 338 Pair of sensor strips 1200 mm	consisting of two complete sensor strips for protection of the swivelling range of automatic swing and revolving doors in accordance with DIN 18650 / EN 16005	142219	EV1	Electrical relay	24 V DC +/- 20%

GC 342

Laser scanner for the protection of automatic doors and windows with integrated object and wall blanking



Designation	Description	Ident-No.	Colour	Dimensions	Output
GC 342 (left module)	Laser scanner with one laser curtain for protection of the swivelling range of automatic swing doors / consisting of sensor module, cable and accessories	167433	white	143 x 86 x 40 mm	2 potential-free relay contacts
GC 342 (right module)	Laser scanner with one laser curtain for protection of the swivelling range of automatic swing doors / consisting of sensor module, cable and accessories	167435	black	143 x 86 x 40 mm	2 potential-free relay contacts
GC 342 (left module)	Laser scanner with one laser curtain for protection of the swivelling range of automatic swing doors / consisting of sensor module, cable and accessories	167434	stainless steel colour	143 x 86 x 40 mm	2 potential-free relay contacts
GC 342 (left module)	Laser scanner with one laser curtain for protection of the swivelling range of automatic swing doors / consisting of sensor module, cable and accessories	167432	black	143 x 86 x 40 mm	2 potential-free relay contacts
GC 342 Kit	Laser scanner with one laser curtain for protection of the swivelling range of automatic swing doors / consisting of two sensor modules, cable and accessories	167439	white	143 x 86 x 40 mm	2 potential-free relay contacts
GC 342 (right module)	Laser scanner with one laser curtain for protection of the swivelling range of automatic swing doors / consisting of sensor module, cable and accessories	167437	stainless steel colour	143 x 86 x 40 mm	2 potential-free relay contacts
GC 342 Kit	Laser scanner with one laser curtain for protection of the swivelling range of automatic swing doors / consisting of two sensor modules, cable and accessories	167438	black	143 x 86 x 40 mm	2 potential-free relay contacts
GC 342 (right module)	Laser scanner with one laser curtain for protection of the swivelling range of automatic swing doors / consisting of sensor module, cable and accessories	167436	white	143 x 86 x 40 mm	2 potential-free relay contacts
GC 342 Kit	Laser scanner with one laser curtain for protection of the swivelling range of automatic swing doors / consisting of two sensor modules, cable and accessories	167440	stainless steel colour	143 x 86 x 40 mm	2 potential-free relay contacts

KFT ELBOW SWITCH

Plastic elbow switch, IP rating IP20, for activation of automatic doors



Designation	Description	Ident-No.	Colour	Dimensions	Type of installation
KFT elbow switch	Very flat design, IP rating IP20	114077	stainless steel colour	90 x 179 x 23 mm	Surface-mounted installation
KFT elbow switch	Very flat design, IP rating IP20	114078	white	90 x 179 x 23 mm	Surface-mounted installation

LS 990 ELBOW SWITCH

Elbow switch for activating automatic doors



Designation	Description	Ident-No.	Colour	Dimensions	Type of installation
LS 990 elbow switch	IP rating IP30 H=223mm	128583	Stainless steel	81 x 223 x 18 mm	Flush-mounted installation
LS 990 elbow switch	IP rating IP30 H=223mm	128582	Stainless steel	81 x 223 x 51 mm	Surface-mounted installation
LS 990 elbow switch	IP rating IP30 H=223mm	141041	alpine white	81 x 223 x 51 mm	Surface-mounted installation
LS 990 elbow switch	IP rating IP30 H=223mm	141042	alpine white	81 x 223 x 18 mm	Flush-mounted installation

LED SENSOR SWITCH *

Switch for activating automatic doors



Designation	Description	Ident-No.	Colour	Dimensions	Output
LED sensor switch *	Capacitive push button with blue LED lighting and haptic Braille lettering for activating automatic door systems. Protection rating IP69K	137529	black	100 x 100 x 10 mm	PNP transistor output
LED sensor switch glass *	Capacitive push button with blue LED lighting for activating automatic door systems. Protection rating IP69K	143412	white	100 x 100 x 8 mm	PNP transistor output

RESET BUTTON CABLE HARNESS *

Reset button for fire alarm event for Powerturn F / EMD-F



Designation	Ident-No.
Reset button cable harness 200mm *	180408
Cable harness reset button 540 mm (EMD-F) *	180409
Cable harness reset button 1360 mm (EMD-F) *	185843

DOOR TRANSMISSION CABLE SLIMDRIVE EMD *

For door leaf installation



Designation	Ident-No.
Door transmission cable Slimdrive EMD *	114980

PROGRAMME SWITCHES *

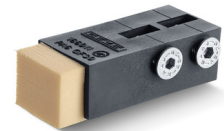
For the Slimdrive EMD swing door drive



Designation	Description	Ident-No.
Programme switch (EMD/EMD-F/EMD Invers) *	Length 1360 mm, incl. accessories	180200
Programme switch (EMD/EMD-F/EMD Invers) *	Length 640 mm, incl. accessories	110198

INTEGRATED OPENING RESTRICTOR *

For limiting the opening angle



Designation	Description	Ident-No.
Integrated opening restrictor *	for sensor roller guide rail GC GR and roller guide rail with deep guide (TSA 160 NT and Slimdrive EMD)	181495
Integrated opening restrictor *	Easy installation in the roller guide rail of TSA 160 NT and Slimdrive EMD	167272

GC 302

Radar movement detector for the activation of automatic doors



Designation	Description	Ident-No.	Colour	Dimensions	Output
GC 302 R radar movement detector	Radar movement detector for the activation of automatic doors	124087	black	176 x 62 x 52 mm	Potential-free relay contact
GC 302 R radar movement detector	Radar movement detector for the activation of automatic doors	124088	according to RAL	176 x 62 x 52 mm	Potential-free relay contact

GC 307+ *

Non-contact proximity switch for activating automatic doors



Designation	Description	Ident-No.	Colour	Dimensions	Type of installation
GC 307+ (hand icon) *	Proximity switch for the activation of automatic doors	195727	alpine white	80 x 80 x 21 mm	Surface-mounted installation
GC 307+ (WC icon) *	Proximity switch for the activation of automatic doors / Suitable for Powerturn, EMD, and standard sliding doors	195751	alpine white	80 x 80 x 21 mm	Surface-mounted installation
GC 307+ (hand icon) *	Proximity switch for the activation of automatic doors	193226	alpine white	80 x 80 x 8 mm	Flush-mounted installation
GC 307+ (WC icon) *	Proximity switch for the activation of automatic doors / Suitable for Powerturn, EMD, and standard sliding doors	195750	alpine white	80 x 80 x 8 mm	Flush-mounted installation

GC 342+ *

Laser scanner for the protection of automatic swing doors with integrated object and wall blanking



Designation	Description	Ident-No.	Colour	Dimensions	Output
GC 342+ (left module) *	Laser scanner with four laser curtains for optimal protection of the hazardous areas - including the secondary closing edge - of automatic swing doors; additional output for non-contact activation / consisting of sensor module, cable and accessories	198693	stainless steel colour	145 x 88 x 68 mm	3 potential-free relay contacts
GC 342+ (left module) *	Laser scanner with four laser curtains for optimal protection of the hazardous areas - including the secondary closing edge - of automatic swing doors; additional output for non-contact activation / consisting of sensor module, cable and accessories	198669	black	145 x 88 x 68 mm	3 potential-free relay contacts
GC 342+ (left module) *	Laser scanner with four laser curtains for optimal protection of the hazardous areas - including the secondary closing edge - of automatic swing doors; additional output for non-contact activation / consisting of sensor module, cable and accessories	198671	white	145 x 88 x 68 mm	3 potential-free relay contacts
GC 342+ (right module) *	Laser scanner with four laser curtains for optimal protection of the hazardous areas - including the secondary closing edge - of automatic swing doors; additional output for non-contact activation / consisting of sensor module, cable and accessories	198694	stainless steel colour	145 x 88 x 68 mm	3 potential-free relay contacts
GC 342+ (right module) *	Laser scanner with four laser curtains for optimal protection of the hazardous areas - including the secondary closing edge - of automatic swing doors; additional output for non-contact activation / consisting of sensor module, cable and accessories	198670	black	145 x 88 x 68 mm	3 potential-free relay contacts
GC 342+ (right module) *	Laser scanner with four laser curtains for optimal protection of the hazardous areas - including the secondary closing edge - of automatic swing doors; additional output for non-contact activation / consisting of sensor module, cable and accessories	198692	white	145 x 88 x 68 mm	3 potential-free relay contacts

LED SENSOR FOOT SWITCH *

Switch for activating automatic doors



Designation	Description	Ident-No.	Colour	Dimensions	Output
LED sensor foot switch *	Capacitive push button for activating automatic door systems. Protection rating IP69K	182936	Stainless steel	100 x 100 x 3 x 14 mm	PNP transistor output

AS 500 *

AS emergency stop switch with glass pane and five interchangeable labels ("Nottaster öffnen", "Notschalter", "Emergency switch", "Tür schließen" and without text)



Designation	Description	Ident-No.	Colour	Dimensions	Type of installation
AS 500 emergency stop switch	Rocker control switch with glow lamp, glass pane and five exchangeable labels ("open emergency push button", "emergency stop switch", "emergency switch", "close door" and no label)	120881	alpine white/red	80 x 80 x 21 mm	Flush-mounted installation

AIR 20

Active infrared light switch for monitoring the door handle of automatic swing doors



Designation	Description	Ident-No.	Colour	Dimensions	Operating voltage
AIR 20-Var	Light switch for monitoring the door handle of automatic swing doors	082689	black	72 x 66 x 49 mm	24 V

DPS

Display programme switch for setting the mode of operation for automatic doors



Designation	Description	Ident-No.	Colour	Dimensions	Operating voltage
Display programme switch DPS with OFF switch	Configuring the mode of operation as well as commissioning and parameter setting for automatic doors / with 5x control keys, 2x7 segment display, alphanumerical fault display, IP rating IP40	151524	alpine white	80 x 80 x 53 mm	24 V DC
DPS with OFF switch and SCT key switch	in combined double frame without Euro profile half cylinder	155810	alpine white	80 x 151 x 50 mm	24 V DC

EFT ELBOW SWITCH *

Stainless steel elbow switch with IP65 IP rating for activating automatic doors



Designation	Description	Ident-No.	Colour	Dimensions	Type of installation
EFT elbow switch	Very flat design / IP rating IP65	119898	Stainless steel	75 x 250 x 17 mm	Surface-mounted installation

MINI LED SENSOR SWITCH *

Activation of all GEZE automatic doors



Designation	Description	Ident-No.	Colour	Dimensions	Output
LED sensor switch 20 mm *	Capacitive push button for activating automatic door systems. Protection rating IP69K	143273	Aluminium, matt	28.5 x 28.5 x 21 mm	PNP transistor output

MPS

Mechanical programme switch for setting the mode of operation for automatic doors



Designation	Description	Ident-No.	Colour	Dimensions	Operating voltage
MPS mechanical programme switch	Setting of the mode of operation of automatic doors with rotary knob, LED fault display, IP rating IP40 / suitable for switch programmes with 55x55mm switch insert	113226	alpine white	80 x 80 x 24 mm	24 V DC
MPS ST mechanical programme switch	Setting of the mode of operation of automatic doors with key, LED fault display, IP rating IP40, keyed alike cylinder, incl. 2x keys / suitable for switch programmes with 55x55mm switch insert	113227	alpine white	80 x 80 x 24 mm	24 V DC

TPS

Keypad programme switch for setting the mode of operation for automatic doors



Designation	Description	Ident-No.	Colour	Dimensions	Operating voltage
TPS keypad programme switch	with 2 control keys, LED display, coded fault display, IP rating IP40 / suitable for switch programmes with 55x55mm switch insert	113231	alpine white	80 x 80 x 11 mm	24 V DC
TPS keypad programme switch and SCT key switch	in combined double frame without Euro profile half cylinder	113232	alpine white	80 x 152 x 11 mm	24 V DC

AS 500 ROCKER PUSH BUTTON

Activation of all GEZE automatic doors



Designation	Ident-No.	Colour	Dimensions	Type of installation
AS 500 rocker push button	120888	alpine white	80 x 80 x 9 mm	Flush-mounted installation

Slimdrive EMD-F/R-IS *



PULL SWITCH *

For triggering calls in barrier-free bathrooms or WCs



Designation	Description	Ident-No.	Colour	Dimensions	Type of installation
Pull switch	Incl. pull chain 500 mm long	008607	red	36 x 94 x 34 mm	Surface-mounted installation

GC 308 *

Radar movement detector with individual adjustment option for activating automatic doors



Designation	Description	Ident-No.	Colour	Dimensions	Output
GC 308 R radar movement detector *	Activation of automatic drives	203605	stainless steel colour	120 x 50 x 50 mm	Potential-free relay contact
GC 308 R radar movement detector *	Activation of automatic drives	203603	black	120 x 50 x 50 mm	Potential-free relay contact
GC 308 R radar movement detector *	Activation of automatic drives	203604	white	120 x 50 x 50 mm	Potential-free relay contact

DIGITAL PROGRAMMABLE TIMER *

For time-controlled changes of modes of operation on automatic doors



REED SWITCH *

For non-contact monitoring of the door leaf position



Designation	Description	Ident-No.	Colour
Reed switch *	For non-contact monitoring of the door leaf position	092777	white

E2 ROCKER PUSH BUTTON

Activation of all GEZE automatic doors



Designation	Ident-No.	Colour	Dimensions	Type of installation
E2 rocker push button	094013	pure white matt	80.8 x 80.8 x 9.3 mm	Flush-mounted installation

LS 990 ROCKER PUSH BUTTON

Activation of all GEZE automatic doors



Designation	Ident-No.	Colour	Dimensions	Type of installation
LS 990 rocker push button	098396	Stainless steel	81 x 81 x 11 mm	Flush-mounted installation

* The products designated above may vary in form, type, characteristics, function, or availability depending on the country. Please get in touch with your GEZE contact person if you have any questions.