

Product data sheet

Perlan 140 wood

concealed wall bracket



Sliding door fitting system for timber, plastic, or metal doors
with a leaf weight of 140 kg and concealed wall bracket

AREAS OF APPLICATION

- Frequently used interior sliding doors
- Living, office, and conference areas as well as hotels
- Installation of fittings in all visible areas
- For elegant room design
- Visible attachment
- Single and double leaf sliding doors

Perlan 140 wood concealed wall bracket

PRODUCT FEATURES

- Sliding door fitting for leaf weights of up to 140 kg
- For leaves made of wood, plastic, or metal
- The Perlan track is screwed into the wall bracket from below, therefore covering the otherwise visible fixings when in an installed state
- Spacer profiles enable quick compensation of the interval between the track and protruding frames or foot ledge profiles
- With damping on one or both sides for doors with up to 80 kg leaf weight, so that the door is quietly slowed down and moved into the end position
- Precision ball bearings in the roller carriages offer very smooth sliding action
- Tested for durability in accordance with DIN EN 1527 over 100,000 test cycles
- Retractable suspension plates allow for the door to be installed with a small clearance between the track and the upper edge of the door

TECHNICAL DATA

Productname	Perlan 140 wood concealed wall bracket
-------------	--

PART

PERLAN 140 SET FOR TIMBER LEAVES

Sliding door fitting for glass leaves with up to 140 kg leaf weight



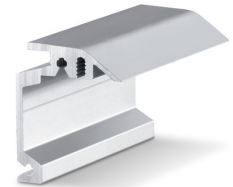
Designation	Description	Ident-No.	Colour	Leaf width (min.)	Leaf width (max.)
Perlan 140 set for timber leaves	For ceiling installation with standard suspension plate, up to 140 kg leaf weight	119354	EV1	500 mm	1040 mm
Perlan 140 set for timber leaves	For ceiling installation with standard suspension plate, up to 140 kg leaf weight	119355	EV1	500 mm	1240 mm
Perlan 140 set for timber leaves	For ceiling installation with standard suspension plate, up to 140 kg leaf weight	119353	EV1	500 mm	840 mm
Perlan 140 set for timber leaves	For ceiling installation with standard suspension plate, up to 140 kg leaf weight	119356	EV1	500 mm	1440 mm
Perlan 140 set for timber leaves	For ceiling installation with standard suspension plate, up to 140 kg leaf weight	119357	EV1	500 mm	1640 mm

Perlan 140 wood concealed wall bracket



WALL BRACKET CONCEALED PERLAN

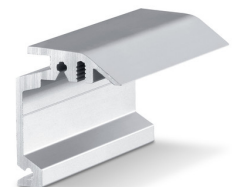
Wall bracket for concealed wall installation of tracks



Designation	Description	Ident-No.	Colour
Wall bracket concealed Perlan	bespoke, for use with up to 43 mm leaf thickness	130449	Stainless steel optic
Wall bracket concealed Perlan	bespoke, for use with up to 43 mm leaf thickness	130443	EV1

WALL BRACKET CONCEALED PERLAN

Wall bracket for concealed wall installation of tracks



Designation	Description	Ident-No.	Colour	Type of installation
Wall bracket concealed Perlan	For use up with to 43 mm leaf thickness	130445	Stainless steel optic	Wall
Wall bracket concealed Perlan	For use up with to 43 mm leaf thickness	130444	Stainless steel optic	Wall
Wall bracket concealed Perlan	For use up with to 43 mm leaf thickness	130447	Stainless steel optic	Wall
Wall bracket concealed Perlan	For use up with to 43 mm leaf thickness	130439	EV1	Wall
Wall bracket concealed Perlan	For use up with to 43 mm leaf thickness	130440	EV1	Wall
Wall bracket concealed Perlan	For use up with to 43 mm leaf thickness	130446	Stainless steel optic	Wall
Wall bracket concealed Perlan	For use up with to 43 mm leaf thickness	130435	EV1	Wall
Wall bracket concealed Perlan	For use up with to 43 mm leaf thickness	130436	EV1	Wall
Wall bracket concealed Perlan	For use up with to 43 mm leaf thickness	130438	EV1	Wall

TRACK PERLAN 140

Track for sliding door fitting



Designation	Description	Ident-No.	Colour
Track Perlan 140	with countersunk drill holes (prepared for Perlan SoftStop)	142518	EV1
Track Perlan 140	with countersunk drill holes (prepared for Perlan SoftStop)	128660	EV1
Track Perlan 140	with countersunk drill holes (prepared for Perlan SoftStop)	128662	Stainless steel optic
Track Perlan 140	with countersunk drill holes (prepared for Perlan SoftStop)	135061	Stainless steel optic
Track Perlan 140	with countersunk drill holes (prepared for Perlan SoftStop)	135048	EV1
Track Perlan 140	with countersunk drill holes (prepared for Perlan SoftStop)	135050	Stainless steel optic



Designation	Description	Ident-No.	Colour
Track Perlan 140	with countersunk drill holes (prepared for Perlan SoftStop)	135049	Stainless steel optic
Track Perlan 140	with countersunk drill holes (prepared for Perlan SoftStop)	135047	EV1
Track Perlan 140	with countersunk drill holes (prepared for Perlan SoftStop)	142519	EV1
Track Perlan 140	with countersunk drill holes (prepared for Perlan SoftStop)	135046	EV1

ACCESSORIES

CONCEALED SUSPENSION PROFILE SET

For milling into the wooden leaf



Designation	Description	Ident-No.
Concealed suspension profile set	2 pieces, for milling into the timber leaf, including suspension bolts and flat open-ended spanner for vertical adjustment	138015

END STOP WITH ADJUSTABLE HOLD-OPEN SPRING

Adjustable end stop for Perlan sliding door fitting



Designation	Ident-No.
End stop with adjustable hold-open spring	069274

HOLD-OPEN SPRING

Hold-open spring for Perlan 140 end stop



Designation	Ident-No.
Hold-open spring	064242

Perlan 140 wood concealed wall bracket



DOOR STOP

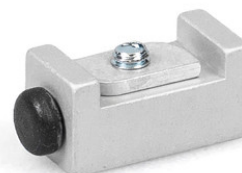
End stop for sliding leaves



Designation	Ident-No.
Door stop	000339
Door stop	000342

BUFFER FOR CONTINUOUS FLOOR GUIDE *

Buffer for continuous floor guides integrated in the floor



Designation	Ident-No.
Buffer for continuous floor guide	124655

ALL-GLASS SYSTEM STAINLESS STEEL SINGLE POINT FIXING SET

Stainless steel single point fixing for toughened safety glass panes



Designation	Description	Ident-No.	Colour	Glass thickness
All-glass system stainless steel single point fixing set	2 pieces, brushed, for wooden leaves and glass leaves 8-12 mm, including 4 Rampa sleeves (wood) and installation material for glass	127961	Stainless steel	8 - 12 mm

Perlan 140 wood concealed wall bracket



PERLAN SOFTSTOP SET, MEDIUM VERSION, DAMPED ON ONE SIDE, UP TO 80 KG

Perlan SoftStop damping on one side for leaf weights up to 80 kg and leaf widths of 900 up to 1290 mm



Designation	Description	Ident-No.	Leaf width (min.)	Leaf width (max.)
Perlan SoftStop set, medium, one side	The set includes: 2 x roller carriage with damping unit on one side, 2 x end stop, 1 x trigger with fixing screw, 2 x standard suspension plate	128877	900 mm	1290 mm

PERLAN SOFTSTOP SET, LONG VERSION, DAMPED ON BOTH SIDES, UP TO 80 KG

Perlan SoftStop damping on both sides for leaf weights up to 80 kg



Designation	Description	Ident-No.	Leaf width (min.)	Leaf width (max.)
Perlan SoftStop set, long, both sides	The set includes: 2 x roller carriage with damping unit on both sides, 2 x end stop, 2 x trigger with fixing screws, 2 x standard suspension plate	128891	1290 mm	1700 mm

SET PERLAN SOFTSTOPDUO, DAMPED ON BOTH SIDES

Perlan SoftStopDuo with damping on both sides up to 80 kg leaf weight



Designation	Description	Ident-No.	Leaf width (min.)	Leaf width (max.)
Perlan SoftStopDuo set, damped on both sides, up to 80 kg	The set includes: 2 x roller carriage with damping unit on both sides, 2 x end stop, 2 x trigger with fixing screws, 2 x standard suspension plate	150071	750 mm	1290 mm

Perlan 140 wood concealed wall bracket



DOOR PULL HANDLE, CONFIGURED *

Push bar – round design for installation on glass leaves



Designation	Ident-No.	Colour
Door pull handle, configured *	127616	Stainless steel

PERLAN SOFTSTOP SET, SHORT VERSION, DAMPED ON ONE SIDE, UP TO 80 KG

Perlan SoftStop damping on one side for leaf weights up to 80 kg and leaf widths of 575 to 900 mm



Designation	Description	Ident-No.	Leaf width (min.)	Leaf width (max.)
Perlan SoftStop set, short, one side	The set includes: 2 x roller carriage with damping unit on one side, 2 x end stop, 1 x trigger with fixing screw, 2 x standard suspension plate	128876	575 mm	900 mm

SPACER PROFILE 10 MM FOR CONCEALED WALL BRACKET PERLAN 43 MM

Spacer profile for wall installation for leaf thicknesses up to 43 mm



Designation	Description	Ident-No.	Colour
Spacer profile 10 mm for concealed wall bracket Perlan 43 mm	for use with "concealed wall bracket up to 43 mm", stackable up to 20 mm spaces	136679	EV1
Spacer profile 10 mm for concealed wall bracket Perlan 43 mm	for use with "concealed wall bracket up to 43 mm", stackable up to 20 mm spaces	136711	EV1
Spacer profile 10 mm for concealed wall bracket Perlan 43 mm	for use with "concealed wall bracket up to 43 mm", stackable up to 20 mm spaces	136712	EV1
Spacer profile 10 mm for concealed wall bracket Perlan 43 mm	bespoke configuration	136717	
Spacer profile 10 mm for concealed wall bracket Perlan 43 mm	for use with "concealed wall bracket up to 43 mm", stackable up to 20 mm spaces	136680	EV1
Spacer profile 10 mm for concealed wall bracket Perlan 43 mm	for use with "concealed wall bracket up to 43 mm", stackable up to 20 mm spaces	136716	Stainless steel optic
Spacer profile 10 mm for concealed wall bracket Perlan 43 mm	for use with "concealed wall bracket up to 43 mm", stackable up to 20 mm spaces	136714	Stainless steel optic
Spacer profile 10 mm for concealed wall bracket Perlan 43 mm	for use with "concealed wall bracket up to 43 mm", stackable up to 20 mm spaces	136715	Stainless steel optic

Perlan 140 wood concealed wall bracket



Designation	Description	Ident-No.	Colour
Spacer profile 10 mm for concealed wall bracket Perlan 43 mm	for use with "concealed wall bracket up to 43 mm", stackable up to 20 mm spaces	136713	Stainless steel optic

* The products designated above may vary in form, type, characteristics, function, or availability depending on the country. Please get in touch with your GEZE contact person if you have any questions.