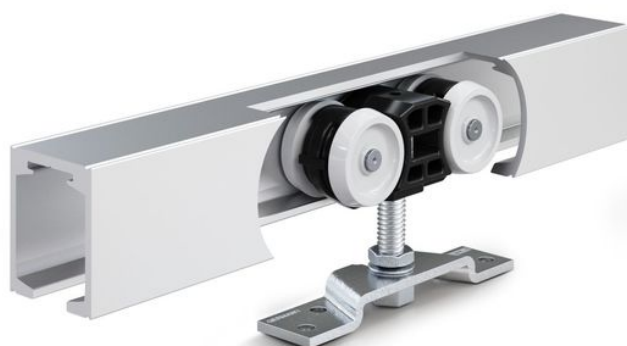


# Product data sheet

# Perlan 140 wood wall installation



Sliding door fitting system for timber, plastic, or metal doors  
with a leaf weight of 140 kg and wall installation

## AREAS OF APPLICATION

- Frequently used interior sliding doors
- Living, office, and conference areas as well as hotels
- Installation of fittings in all visible areas
- Single and multiple-leaf sliding doors
- Installation in front of the wall

# Perlan 140 wood wall installation

## PRODUCT FEATURES

- Sliding door fitting for leaf weights of up to 140 kg
- For leaves made of wood, plastic, or metal
- With damping on one or both sides for doors with up to 80 kg leaf weight, so that the door is quietly slowed down and moved into the end position
- Adjustable wall brackets balance out uneven masonry and allow for a freely selectable clearance from the wall
- Precision ball bearings in the roller carriages offer very smooth sliding action
- Tested in accordance with DIN EN 1527 over 100,000 test cycles for durability
- Retractable suspension plates allow for the door to be installed with a small clearance between the track and the upper edge of the door

## TECHNICAL DATA

Productname

Perlan 140 wood wall installation

## PART

### PERLAN 140 SET FOR TIMBER LEAVES

Sliding door fitting for wall installation and timber leaves



## Designation

Perlan 140 set for timber leaves

Perlan 140 set for timber leaves

Perlan 140 set for timber leaves

Perlan 140 set for timber leaves

Perlan 140 set for timber leaves

# Perlan 140 wood wall installation



## PERLAN 140 SET FOR TIMBER LEAVES

Sliding door fitting for wall installation and timber leaves



### Designation

Perlan 140 set for timber leaves

Perlan 140 set for timber leaves

## ACCESSORIES

### CONCEALED SUSPENSION PROFILE SET

For milling into the wooden leaf



### Designation

Concealed suspension profile set

### END STOP WITH ADJUSTABLE HOLD-OPEN SPRING

Adjustable end stop for Perlan sliding door fitting



### Designation

End stop with adjustable hold-open spring

# Perlan 140 wood wall installation



## HOLD-OPEN SPRING

Hold-open spring for Perlan 140 end stop



### Designation

Hold-open spring

## DOOR STOP

End stop for sliding leaves



### Designation

Door stop

Door stop

## HEIGHT COMPENSATION MECHANISM / CEILING DISTANCE SET, WITH VARIABLE ADJUSTMENT

Height compensation with variable adjustment for ceiling installation of tracks



### Designation

Height compensation mechanism / ceiling distance set, with variable adjustment

## ALL-GLASS SYSTEM STAINLESS STEEL SINGLE POINT FIXING SET

Stainless steel single point fixing for toughened safety glass panes



# Perlan 140 wood wall installation



---

## Designation

All-glass system stainless steel single point fixing set

---

### PERLAN SOFTSTOP SET, MEDIUM VERSION, DAMPED ON ONE SIDE, UP TO 80 KG

Perlan SoftStop damping on one side for leaf weights up to 80 kg and leaf widths of 900 up to 1290 mm



---

## Designation

Perlan SoftStop set, medium, one side

---

### PERLAN SOFTSTOP SET, LONG VERSION, DAMPED ON BOTH SIDES, UP TO 80 KG

Perlan SoftStop damping on both sides for leaf weights up to 80 kg



---

## Designation

Perlan SoftStop set, long, both sides

---

### SET PERLAN SOFTSTOPDUO, DAMPED ON BOTH SIDES

Perlan SoftStopDuo with damping on both sides up to 80 kg leaf weight



---

## Designation

Perlan SoftStopDuo set, damped on both sides, up to 80 kg

---

# Perlan 140 wood wall installation



## DOOR PULL HANDLE, CONFIGURED \*

Push bar – round design for installation on glass leaves

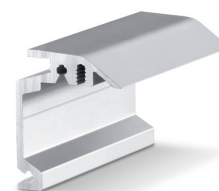


### Designation

Door pull handle, configured \*

## WALL BRACKET CONCEALED PERLAN

Wall bracket for concealed wall installation of tracks



### Designation

Wall bracket concealed Perlan

Wall bracket concealed Perlan

## PERLAN SOFTSTOP SET, SHORT VERSION, DAMPED ON ONE SIDE, UP TO 80 KG

Perlan SoftStop damping on one side for leaf weights up to 80 kg and leaf widths of 575 to 900 mm

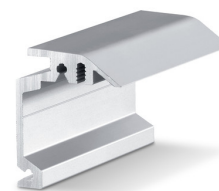


### Designation

Perlan SoftStop set, short, one side

## WALL BRACKET CONCEALED PERLAN

Wall bracket for concealed wall installation of tracks



# Perlan 140 wood wall installation



## Designation

Wall bracket concealed Perlan

Wall bracket concealed Perlan

Wall bracket concealed Perlan

Wall bracket concealed Perlan

Wall bracket concealed Perlan

Wall bracket concealed Perlan

Wall bracket concealed Perlan

Wall bracket concealed Perlan

Wall bracket concealed Perlan

## COMPLETE CLIP-ON COVER SET 100

Clip-on cover for covering Perlan door fitting systems



## Designation

Complete clip-on cover set 100

\* The products designated above may vary in form, type, characteristics, function, or availability depending on the country. Please get in touch with your GEZE contact person if you have any questions.